



**CNX Midstream Partners**  
 1000 Horizon Vue Drive  
 Canonsburg, PA 15317-6506  
 Website: www.cnx.com

**ABOUT CNX MIDSTREAM PARTNERS**

CNXM is a growth-oriented master limited partnership that owns, operates, and develops natural gas gathering, and other midstream energy assets in the Marcellus and Utica Shales in Pennsylvania and West Virginia. With headquarters located in Canonsburg, PA, our assets include natural gas gathering pipelines, compression and dehydration facilities, as well as condensate gathering, collection, separation and stabilization facilities.

**LIAISON WITH APPROPRIATE PUBLIC OFFICIALS**

The Code of Federal Regulations Title 49, Part 192 requires operators of natural gas pipelines to maintain liaison with appropriate fire, police, and other public officials to:

- 1) Learn the responsibility and resources of each government organization that may respond to a gas pipeline emergency;
- 2) Acquaint the officials with the operator's ability in responding to a gas pipeline emergency;
- 3) Identify the types of gas pipeline emergencies of which the operator notifies the officials; and
- 4) Plan how the operator and officials can engage in mutual assistance to minimize hazards to life or property.

CNXM attends the Paradigm Liaison Services meetings within its operating area and has developed this information in order to comply with the Code of Federal Regulations Part 192.

**WHAT CONSTITUTES A GAS PIPELINE EMERGENCY?**

A gas pipeline emergency may be, but is not limited to one or more of the following situations:

- 1) Gas detected inside or near a building.
- 2) Fire located near or directly involving a pipeline facility.

- 3) Explosion occurring near or directly involving a pipeline facility.
- 4) Natural disaster involving a pipeline facility including subsidence, landslides, flooding, washed-out or exposed pipelines.
- 5) Third party damage of the pipeline.
- 6) Vandalism or sabotage to a pipeline facility.

These are the type of emergencies of which police, fire, and emergency services may be notified.

**RESOURCES OF EMERGENCY RESPONSE ORGANIZATIONS**

The various organizations that have been invited to attend the Paradigm Liaison Services meetings within the CNXM operating area have been asked to complete an Emergency Response Report form that includes Public Agency Information, Emergency Information and Emergency Response Capabilities. The information provides CNXM with an understanding of the resources the various agencies have to assist in the event of a gas pipeline emergency.

**RESPONSIBILITY OF EMERGENCY RESPONSE ORGANIZATIONS**

CNXM may request assistance from emergency agencies in the event of a gas pipeline emergency. Following are some guidelines concerning what may be requested from the agencies:

**Police**

- Establish a restricted zone around the emergency site.
- Evacuate buildings within the restricted zone.
- Prevent unauthorized personnel from entering the restricted zone.
- Preserve the area for accident investigation.

**Fire**

- Establish a restricted zone around the emergency site.
- Evacuate buildings within the restricted zone.

**EMERGENCY CONTACT:  
1-844-700-2663**

<b>PRODUCTS/ DOT GUIDEBOOK ID#/ GUIDE#:</b>		
Natural Gas	1971	115

**Regulated Pipeline Operations**

**PENNSYLVANIA COUNTIES**

Greene	Washington
Indiana	Westmoreland
Jefferson	

**WEST VIRGINIA COUNTIES**

Marshall	Ritchie
Monongalia	Tyler

*Changes may occur. Contact the operator to discuss their pipeline systems and areas of operation.*

- Eliminate potential ignition sources.
- Search and rescue operations.
- Contain and control secondary fires.

**Emergency Services**

- Provide medical assistance.
- Provide ambulance service.
- Provide air evacuation service.



## What not to do:

- Do not operate any mainline valves, pipeline components or equipment.
- If gas is not burning, do not take any action that may ignite it. If gas is burning, do not attempt to put out the fire, unless requested to do so by gas company personnel.

## CNXM: EMERGENCY PLAN RESPONSES TO A GAS PIPELINE EMERGENCY

In the event of a gas pipeline emergency, CNXM personnel have been trained, qualified and may perform several or all of the following actions depending on the severity of the emergency:

- Locate the site of the emergency.
- Take actions toward protecting the public first and then property, these actions may include:
  - i. Detect presence of gas in atmosphere.
  - ii. Reducing or stopping the flow of gas.
  - iii. Establishing a restricted zone around the emergency site.
  - iv. Eliminating potential ignition sources.
  - v. Evacuation of buildings within the restricted zone.
- Notify police, fire department, and/or other appropriate officials.

- Provide a company representative to work with appropriate officials during the emergency.
- Establish a staging area to coordinate and develop a plan of action with emergency officials.
- Provide facility maps and information to the appropriate officials.
- Repair the affected facilities.
- Investigate the cause of the incident.

If you would like to discuss or obtain a copy of our Emergency Response Plan, please contact us using the information provided at the top of the company page.

## PIPELINE SAFETY AND INTEGRITY

The company's Communications/ Control Center operates 24-hours a day, seven days a week all throughout the year. We patrol our pipeline rights of way and conduct leak surveys on a regular basis. We conduct periodic inspections of our pipelines and our employees who perform safety sensitive functions receive updated training and are qualified in accordance with the US Department of Transportation regulations for natural gas pipeline operators.

## NATIONAL PIPELINE MAPPING SYSTEM

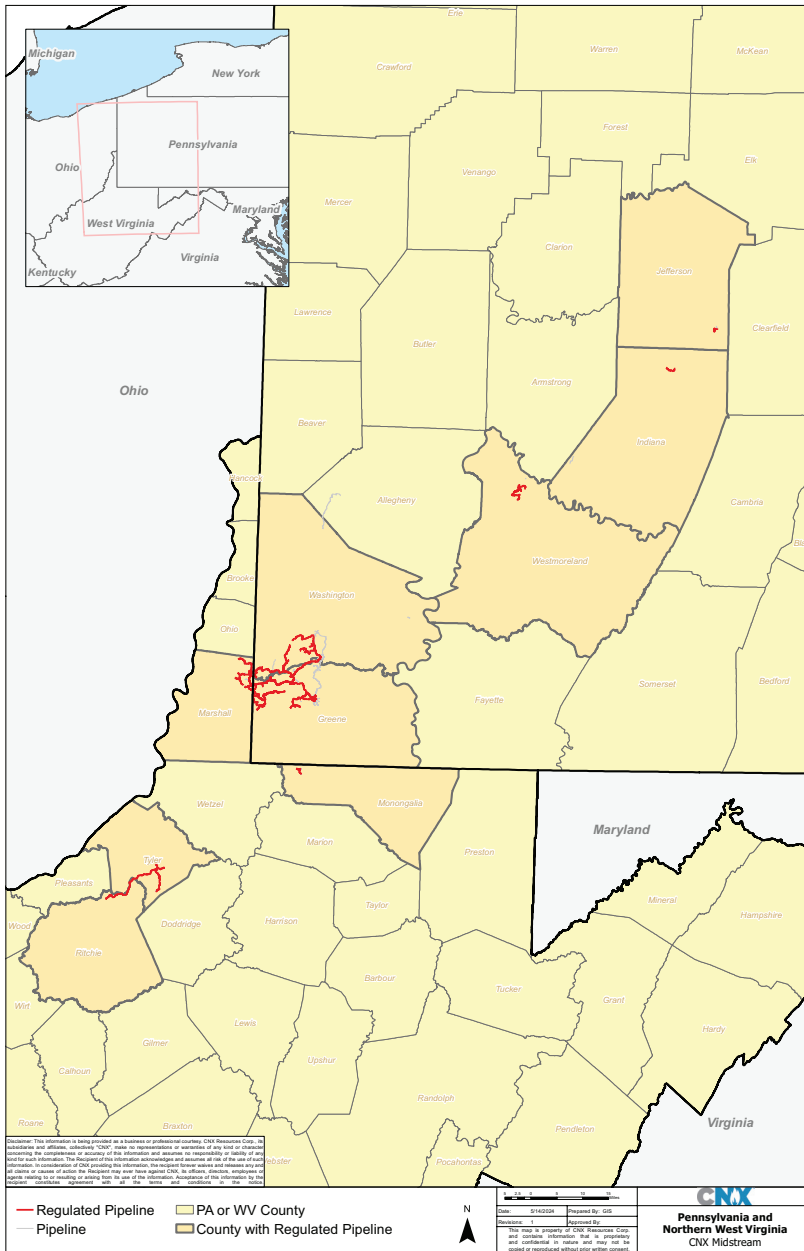
The United States Department of Transportation has a list of pipeline operators searchable by state, county and zip code. To obtain this list, visit [www.npms.phmsa.dot.gov](http://www.npms.phmsa.dot.gov).

## CNXM EMERGENCY PHONE NUMBER:

CNX Midstream Partners:  
**1-844-700-2663**

For additional information concerning CNXM facilities or the public awareness program contact CNX Midstream Partners at:

CNX Midstream Partners  
1000 Horizon Vue Drive  
Canonsburg, PA 15317-6506  
**Attn: Stanley Schurdak**  
Phone: (724) 761-1646



**Pennsylvania 811**  
 Know what's below.  
 Call before you dig.  
 Dial 811 or 1-800-242-1776  
[www.paonecall.org](http://www.paonecall.org)